

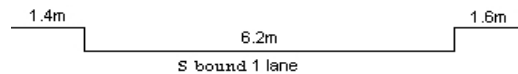
YEAR 2018

COVERAGE (B) STATION 2405

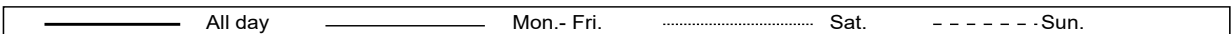
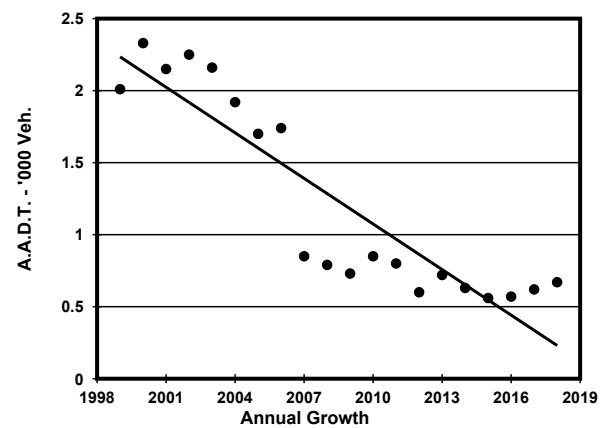
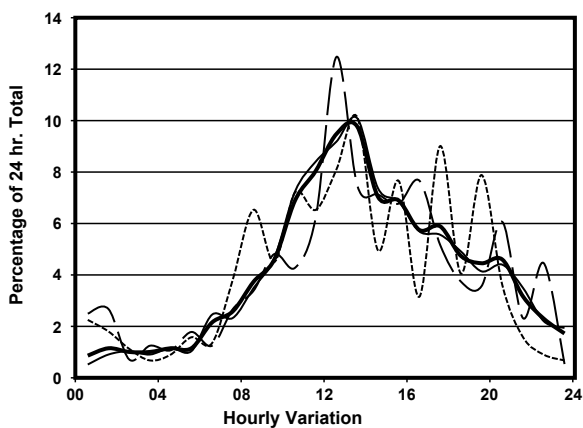
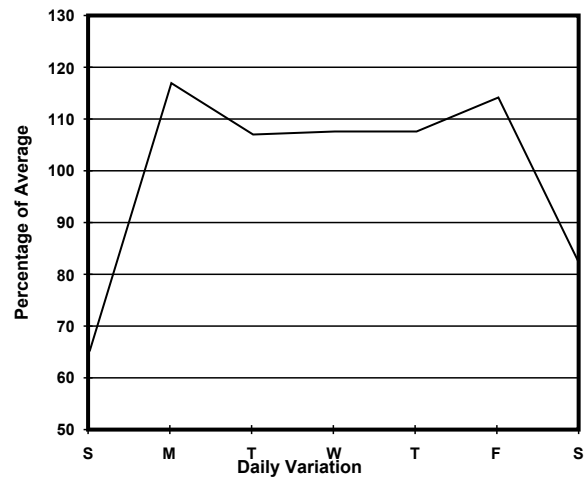
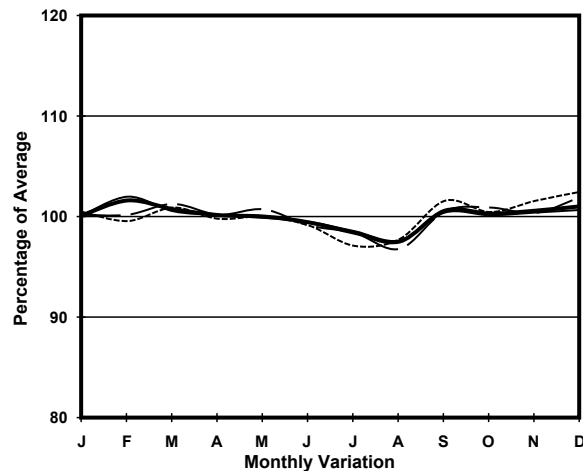
ROAD NETWORK MINOR

ROAD TYPE LOCAL DISTRIBUTOR

LINK COCHRANE ST (from QUEEN'S RD C to WELLINGTON ST)



1. TRAFFIC FLOW VARIATION AND GROWTH



2. TRAFFIC CHARACTERISTICS (BY DIRECTION)

Parameter	All - Day	Mon. - Fri.	Sat.	Sun.
SOUTH BOUND				
A.A.D.T.	670	760	560	450
R 12 / 24 - %	75.4	75.8	71.8	75.7
R 16 / 24 - %	89.9	90	88.2	89.6
AM Peak Hour	0900-1000	0900-1000	0900-1000	0800-0900
One-way flow at AM peak hour	30	40	30	30
T - % (AM)	-	-	-	-
PM Peak Hour	1700-1800	1600-1700	1600-1700	1700-1800
One-way flow at PM peak hour	40	40	40	40
T - % (PM)	-	-	-	-
Prop.of commercial vehicles - 16 hr.	-	-	-	-
A.A.D.T.	-	-	-	-
R 12 / 24 - %	-	-	-	-
R 16 / 24 - %	-	-	-	-
AM Peak Hour	-	-	-	-
One-way flow at AM peak hour	-	-	-	-
T - % (AM)	-	-	-	-
PM Peak Hour	-	-	-	-
One-way flow at PM peak hour	-	-	-	-
T - % (PM)	-	-	-	-
Prop.of commercial vehicles - 16 hr.	-	-	-	-

3. OTHER INFORMATION AND COMMENT

4. Vehicle classification and occupancy - Monday to Friday

Time		Class of vehicle									
		Motor Cycle	Private Car	Taxi	Private LB	PLB	Goods veh.		Non Fr. Bus	Fr. Bus	
							Light	M & H		SD	DD
0700-0800	Pro	0.0	0.0	100.0	0.0	0.0	0.0	0.0	0.0	0.0	0.0
	Ocp	0.0	0.0	1.0	0.0	0.0	0.0	0.0	0.0	0.0	0.0
0800-0900	Pro	0.0	100.0	0.0	0.0	0.0	0.0	0.0	0.0	0.0	0.0
	Ocp	0.0	1.0	0.0	0.0	0.0	0.0	0.0	0.0	0.0	0.0
0900-1000	Pro	0.0	16.7	33.3	0.0	0.0	50.0	0.0	0.0	0.0	0.0
	Ocp	0.0	1.0	1.0	0.0	0.0	1.3	0.0	0.0	0.0	0.0
1000-1100	Pro	0.0	66.7	33.3	0.0	0.0	0.0	0.0	0.0	0.0	0.0
	Ocp	0.0	1.0	1.0	0.0	0.0	0.0	0.0	0.0	0.0	0.0
1100-1200	Pro	12.5	62.5	12.5	0.0	0.0	12.5	0.0	0.0	0.0	0.0
	Ocp	1.0	1.4	1.0	0.0	0.0	3.0	0.0	0.0	0.0	0.0
1200-1300	Pro	0.0	33.3	33.3	0.0	0.0	33.3	0.0	0.0	0.0	0.0
	Ocp	0.0	1.0	3.0	0.0	0.0	1.0	0.0	0.0	0.0	0.0
1300-1400 Peak hour	Pro	22.2	22.2	22.2	0.0	0.0	33.3	0.0	0.0	0.0	0.0
	Ocp	1.0	1.0	1.0	0.0	0.0	1.0	0.0	0.0	0.0	0.0
1400-1500	Pro	14.3	42.9	0.0	0.0	0.0	42.9	0.0	0.0	0.0	0.0
	Ocp	1.0	1.0	0.0	0.0	0.0	2.0	0.0	0.0	0.0	0.0
1500-1600	Pro	25.0	25.0	0.0	0.0	0.0	50.0	0.0	0.0	0.0	0.0
	Ocp	1.0	1.0	0.0	0.0	0.0	1.0	0.0	0.0	0.0	0.0
1600-1700	Pro	0.0	40.0	20.0	0.0	0.0	40.0	0.0	0.0	0.0	0.0
	Ocp	0.0	1.5	1.0	0.0	0.0	2.0	0.0	0.0	0.0	0.0
1700-1800	Pro	33.3	33.3	0.0	0.0	0.0	33.3	0.0	0.0	0.0	0.0
	Ocp	1.0	1.0	0.0	0.0	0.0	2.0	0.0	0.0	0.0	0.0
1800-1900	Pro	0.0	50.0	0.0	0.0	0.0	50.0	0.0	0.0	0.0	0.0
	Ocp	0.0	2.0	0.0	0.0	0.0	1.0	0.0	0.0	0.0	0.0
1900-2000	Pro	0.0	50.0	0.0	0.0	0.0	50.0	0.0	0.0	0.0	0.0
	Ocp	0.0	1.0	0.0	0.0	0.0	1.0	0.0	0.0	0.0	0.0
2000-2100	Pro	33.3	33.3	0.0	0.0	0.0	33.3	0.0	0.0	0.0	0.0
	Ocp	1.0	1.0	0.0	0.0	0.0	2.0	0.0	0.0	0.0	0.0
2100-2200	Pro	0.0	0.0	0.0	0.0	0.0	100.0	0.0	0.0	0.0	0.0
	Ocp	0.0	0.0	0.0	0.0	0.0	1.0	0.0	0.0	0.0	0.0
2200-2300	Pro	0.0	0.0	0.0	0.0	0.0	100.0	0.0	0.0	0.0	0.0
	Ocp	0.0	0.0	0.0	0.0	0.0	1.0	0.0	0.0	0.0	0.0
16 hours	Pro	11.7	36.7	15.0	0.0	0.0	36.7	0.0	0.0	0.0	0.0
	Ocp	1.0	1.2	1.2	0.0	0.0	1.5	0.0	0.0	0.0	0.0

Legend

Pro. Proportion of vehicles in % (Sum may not add up to 100% due to figure rounding)*

Ocp. Average occupancy of vehicles including both driver and passengers*

M&H Medium and Heavy

***** All traffic data are collected from combined bounds except for one way traffic